



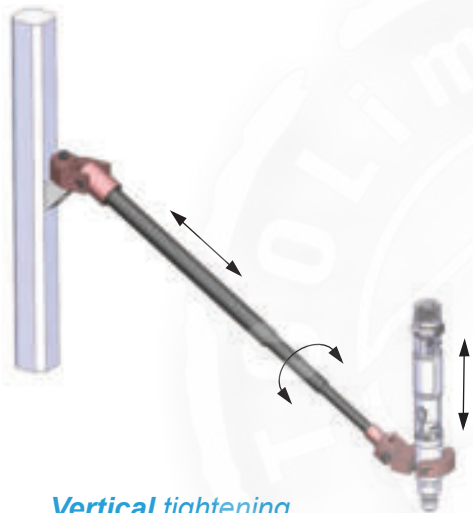
Carbon telescoping arms

DMF/DMFI Series

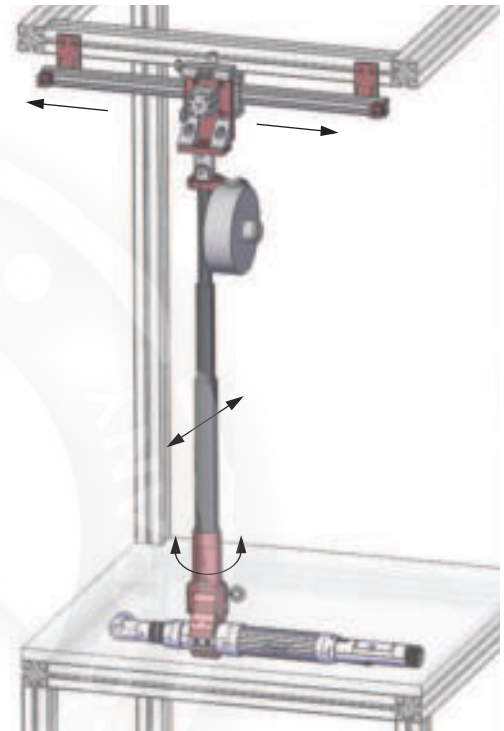


DMF Series : Erase your torque reaction until 300 Nm.

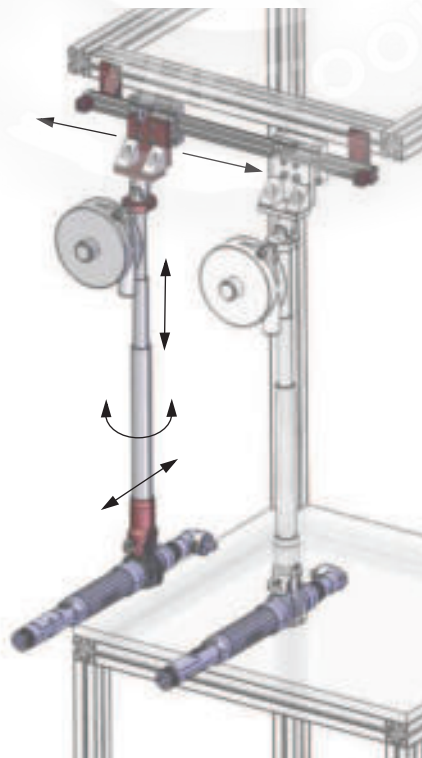
- Comfort : Easy to install on moving assembly line (mountable on existing standard rail). Require little space and doesn't disrupt flow production. Erase torque reaction of power tools.
- Economy : Maintenance free thanks to the carbon fiber (no greasing). Long last of living thanks to the durable carbon fiber.
- Productivity : Easy and quick operator handling thanks to the light weight carbon fiber.



Vertical tightening

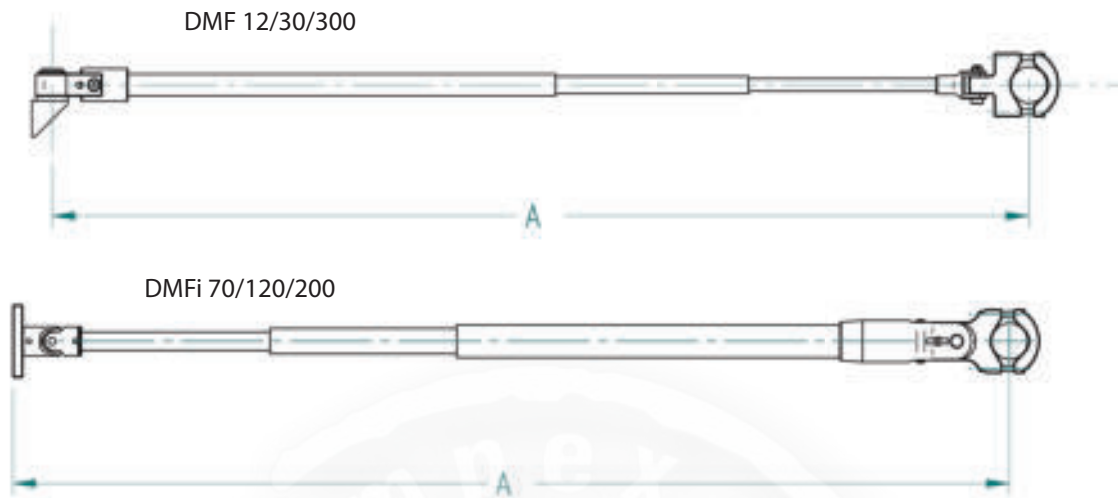


Frontal tightening



Side tightening

Articulated pantograph



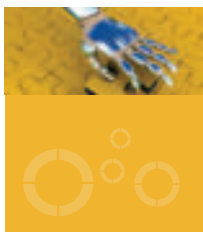
Standard stroke

Model	Max torque (Nm)	Standard clamp	Tool Ø (mm)	A min (mm)	A max (mm)	Code	
						Without clamp	With clamp
DMF 5/950	5	P1	25 - 42	460	950		4-1200445
DMF 12/950	12	P1	25 - 50	460	950		4-1201004
DMF 12/1500	12	P1	25 - 50	650	1500		4-1201005
DMF 12/2000	12	P1	25 - 50	820	2000		4-1201006
DMF 30/960	30	P1	28 - 52	475	960	4-1244000	4-1200074
DMF 30/1500	30	P1	28 - 52	656	1500	4-1244001	4-1200282
DMF 30/2000	30	P1	28 - 52	823	2000	4-1244002	4-1200283
DMF 30/2500	30	P1	28 - 52	993	2500	4-1244003	4-1200284
DMF 30/3000	30	P1	28 - 52	1321	3000	4-1200813	4-1200818
DMFi 70/1500	70	P2	35 - 52	667	1500	4-1244004	4-1244020
DMFi 70/2000	70	P2	35 - 52	833	2000	4-1244005	4-1244021
DMFi 70/2500	70	P2	35 - 52	1000	2500	4-1244006	4-1244022
DMFi 70/3000	70	P2	35 - 52	1330	3000	4-1200814	4-1200819
DMFi 120/1500	120	P2	35 - 52	691	1500	4-1244007	4-1244023
DMFi 120/2000	120	P2	35 - 52	857	2000	4-1244008	4-1244024
DMFi 120/2500	120	P2	35 - 52	1023	2500	4-1244009	4-1244025
DMFi 120/3000	120	P2	35 - 52	1347	3000	4-1200815	4-1200820
DMFi 200/1500	200	P2	Maxi 63	920	1500	4-1244050	4-1244026
DMFi 200/2000	200	P2	Maxi 63	1170	2000	4-1244051	4-1244027
DMFi 200/2500	200	P2	Maxi 63	1420	2500	4-1244052	4-1244028
DMFi 200/3000	200	P2	Maxi 63	1720	3000	4-1200816	4-1200821
DMF 300/1500	300	P2	Maxi 73	970	1500	4-1244053	4-1244029
DMF 300/2000	300	P2	Maxi 73	1220	2000	4-1244054	4-1244030
DMF 300/2500	300	P2	Maxi 73	1470	2500	4-1244055	4-1244031
DMF 300/3000	300	P2	Maxi 73	1800	3000	4-1200817	4-1200822

Other dimensions on request (max length 4 meters).
Torque up to 600 Nm is available on request.

Long stroke (LS)

Model	Max torque (Nm)	Standard clamp	Tool Ø (mm)	A min (mm)	A max (mm)	Code	
						Without clamp	With clamp
DMF 30/1500 LS	30	P1	28 - 52	555	1500	4-1200852	4-1200855
DMF 30/2000 LS	30	P1	28 - 52	680	2000	4-1200853	4-1200856
DMF 30/2500 LS	30	P1	28 - 52	805	2500	4-1200854	4-1200857
DMFi 100/1500 LS	100	P2	35 - 52	592	1500	4-1201213	4-1201221
DMFi 100/2000 LS	100	P2	35 - 52	717	2000	4-1201214	4-1201222
DMFi 100/2500 LS	100	P2	35 - 52	842	2500	4-1201215	4-1201223
DMFi 200/1500 LS	200	P2	Maxi 63	728	1500	4-1201216	4-1201224
DMFi 200/2000 LS	200	P2	Maxi 63	894	2000	4-1201217	4-1201225
DMFi 200/2500 LS	200	P2	Maxi 63	1060	2500	4-1201220	4-1201226



Vertical tightening

DMF/DMFI Series



P1 clamp

For	Clamping	Code
DMF12	Clamp 25/50	Standard
DMF30	Clamp 28/52	Standard
DMFi 70	Mounting plate interface	4-1244032
DMFi 120/200	Mounting plate interface	4-1244033



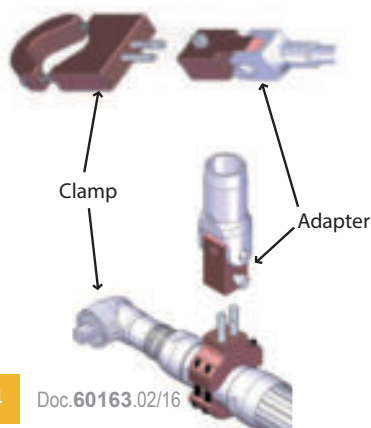
P2 clamp

For	Capacity	Code
DMF30	28/52	4-1200300
DMFi70	35/52	Standard
DMFi120/200	35/52	Standard
DMFi200	63	Standard
DMF300	73	Standard



Quick release clamp

For	Type	Code
DMF12	P1	4-1201003
DMF30	P1	4-1200017
DMFi 70	P2	4-1283102
DMFi 120/200	P2	4-1283103



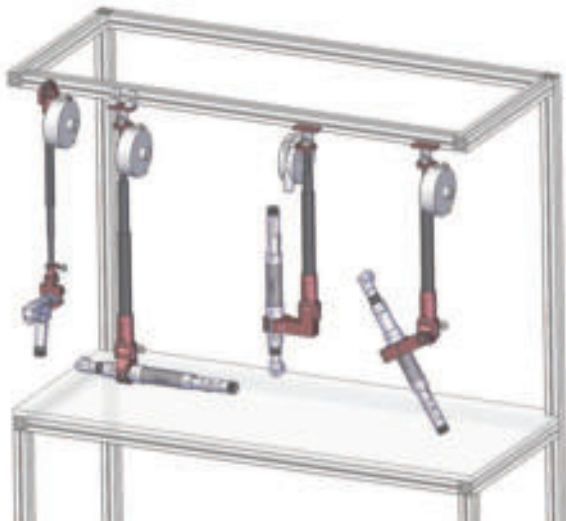
Quick release interface

For	Code
DMF12	4-1200470
DMF30	4-1200471
DMF70	4-1283100
DMF120/200	4-1283101

Frontal tightening

DMF/DMFI Series

Fixed mounting



Mounting on rail with locker



P1 clamp

For	Clamping	Code
DMF12	Clamp 25/50	Standard
DMF30	Clamp 28/52	Standard
DMFi70	Mounting plate interface	4-1244032
DMFi120/200	Mounting plate interface	4-1244033
DMF300	Mounting plate interface	On request



P2 clamp

For	Tool Ø	Code
DMF30	28/52	4-1200300
DMFi70	35/52	Standard
DMFi120/200	35/52	Standard
DMFi200	Max 63	Standard
DMF300	Max 73	Standard



P4 clamp

For	Tool Ø	Code
DMF30	28/52	4-1200302
DMFi70	35/52	4-1244015
DMFi120/200	35/52	4-1244016
DMFi200	Max 63	4-1244058
DMF300	Max 73	4-1244059

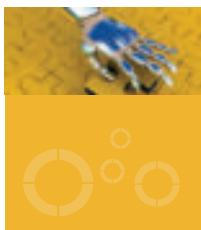


Tilt interface

For	Tool Ø	Code
Interface/DMF30 (for all clamp types)	-	30° 45° 4-1201140 4-1201141

Swivel clamp

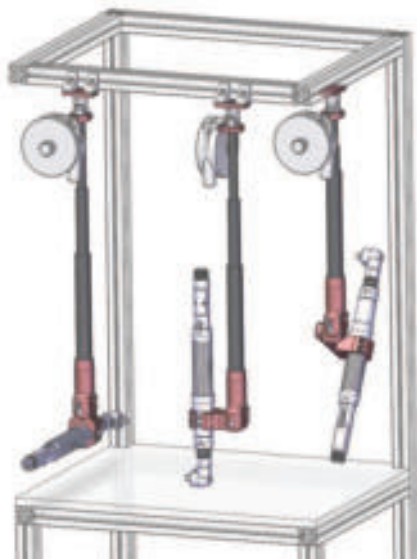
For	Tool Ø	Code
DMFi70 P2/P4	35/52	4-1201137
DMFi120/200 P2/P4	35/52	4-1201138
DMFi200 P2/P4	Max 63	4-1201139
DMF300	Max 73	On request



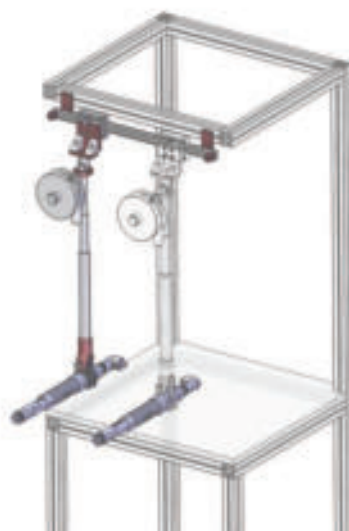
Side tightening

DMF/DMFI Series

Fixed mounting



Mounting on rail



P2 Clamp

For	Tool Ø	Code
DMF30	28/52	4-1200300
DMFi70	35/52	Standard
DMFi120/200	35/52	Standard
DMFi200	Max 63	Standard
DMF300	Max 73	Standard



P3 Clamp

For	Tool Ø	Code
DMF30	28/52	4-1200301
DMFi70	35/52	4-1244013
DMFi120/200	35/52	4-1244014
DMFi200	Max 63	4-1244056
DMF300	Max 73	4-1244057



Tilt interface

For	Tool Ø	Code
Interface / DMF30	-	30° 45° 4-1201140 4-1201141

Swivel clamp

For	Tool Ø	Code
DMFi70	35/52	4-1201137
DMFi120/200	35/52	4-1201138
DMFi200	Max 63	4-1201139
DMF300	Max 73	On request



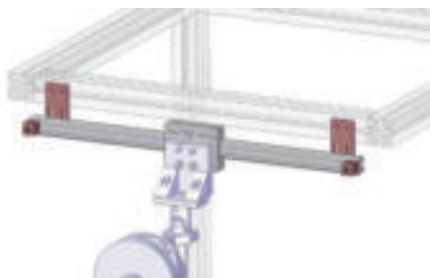
Rotating clamp

For	Tool Ø	Code
DMF30	On request	4-1201134
DMFi70	On request	4-1244034
DMFi120/200	On request	4-1244035
DMFi200	On request	4-1244060
DMF300	On request	4-1201136



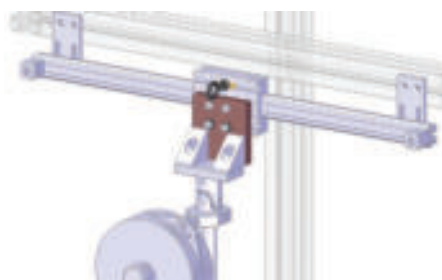
DMF/DMFi

Mounting on rail



Rails

Length	Stroke	Number of flanges	Code
600	450	2	4-1200132
800	650	2	4-1200160
1000	850	2	4-1200161
1200	1050	3	4-1200162
1500	1350	3	4-1200163
2000	1850	4	4-1200164

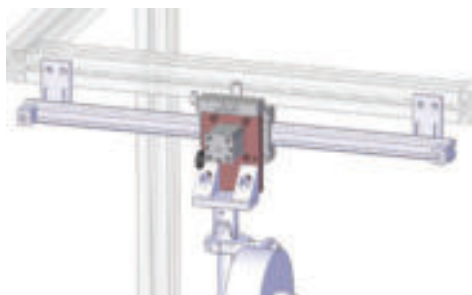


Rail interface

Allows installation of DMF on rail.

For	Code
DMF12/30	4-1200341
DMFi70/120/200	4-1200708
DMF300	4-1200342

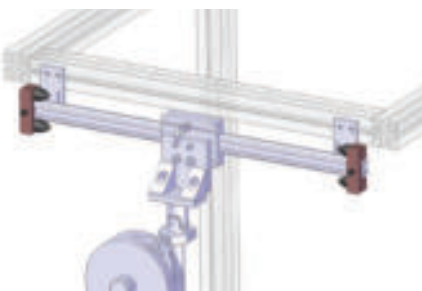
NOTE : delivered without safety hook (Code 4-1200309)



Pneumatic locker

For	Type	Code
DMF12/30	Pneumatic	4-1200442
DMF12/30	Electric	4-1200869
DMFi70/120	Pneumatic	4-1200706
DMFi70/120	Electric	4-1200707
DMFi200	Electric	4-1201150
DMF300	Electric	4-1201142

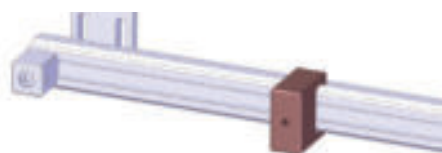
The power tool has to be equipped with a motor run signal.



Absorbing stop

Recommended in case of repeatable side shocks.

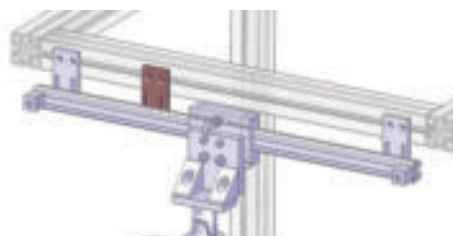
Code 4-1201121 Set of 2



Adjustable stop

To limit the slide of the arm on the rail.

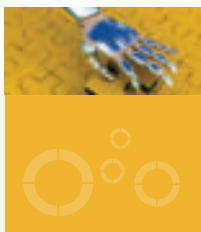
Code 4-1200167



Additional flange

To reinforce the rail installation for high torque applications.

Code 4-1200873



Accessories DMF/DMFi



Rail link

To link two rails together.

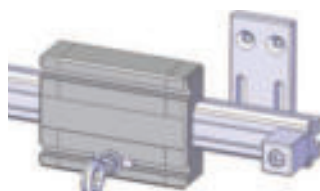
Code 4-1200307



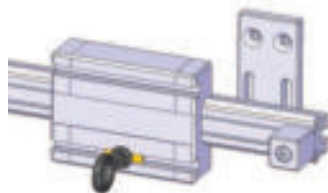
Single trolley

To mount additional tools on the same rail.

- Single trolley Code 4-1200165



- Trolley for additional balancer Code 4-1200166



Additional safety hook

To secure balancer.

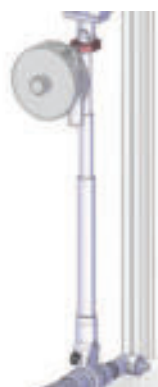
Code 4-1200309



Balancing kit for DMF 12/30/300

For	Tool (Kg)	Code
DMF12	1 to 2	4-1200303
DMF30	1 to 2,5	4-1200304
DMF30	2 to 4	4-1200305
DMF300	4 to 8	4-1200704
DMF300	6 to 10	4-1200705

Balancer attachment kit for DMF30 Code 4-1201143

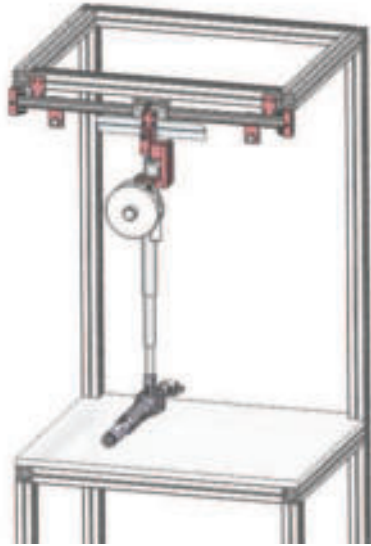


Balancing kit for DMFi 70/120/200

For	Capacity (Kg)	Code
DMFi 70/120/200	2 - 4	4-1200701
DMFi 70/120/200	4 - 6	4-1200702
DMFi 70/120/200	6 - 8	4-1200703

Delivered with balancer attachment kit.

Special arms on request



Additional presence sensors on the rail allow

